



The Dream of Chemistry In Your Life.

SUMITOMO CHEMICAL
CORPORATE PROFILE



Fast Facts

Founded in

1913

Number of overseas facilities

70

(As of July, 2024)

Number of consolidated subsidiaries

184

(As of March 31, 2024)

Number of employees

32,161

on a consolidated basis

(As of March 31, 2024)

Consolidated sales revenue

2,446.9

billion yen

(FY2023)

Number of patents held

14,592

(As of March 31, 2024)



Management Principles

- ◆ **We commit ourselves to creating new value by building on innovation.**
- ◆ **We work to contribute to society through our business activities.**
- ◆ **We build a vibrant corporate culture and continue to be a company trusted by society.**

Profile

Sumitomo Chemical has its origins in the Sumitomo Fertilizer Manufactory, which was founded to resolve the air pollution problem caused by Sumitomo's copper smelting operation at the Besshi Copper Mine (now Niihama, Ehime Prefecture, Japan). The air was cleaned by removing the sulfur from the copper ore and the company used sulfur to manufacture fertilizer. Founded to overcome environmental problem and improve agricultural production at the same time, Sumitomo Chemical has inherited the Sumitomo Spirit, proving itself worthy of society's trust and the credo, "Our business must benefit society at large, not just our own interests".

Both principles have been passed down to us over generations since our inception.

Under these principles, Sumitomo Chemical responds to the changing needs of time, develops a diversified portfolio of businesses, and enriches people's lives through constant technological innovations.

Creative Hybrid Chemistry For a Better Tomorrow

Sumitomo Chemical's Strengths

CORE
COMPETENCE

1

⇒ P.6-7

Ability to Develop Innovative Solutions

by Leveraging
Its Technological Expertise
in Diverse
Areas

CORE
COMPETENCE

2

⇒ P.10-11

Access to Global Markets

CORE
COMPETENCE

3

⇒ P.12-13

Our Highly Engaged and Diverse Human Resources

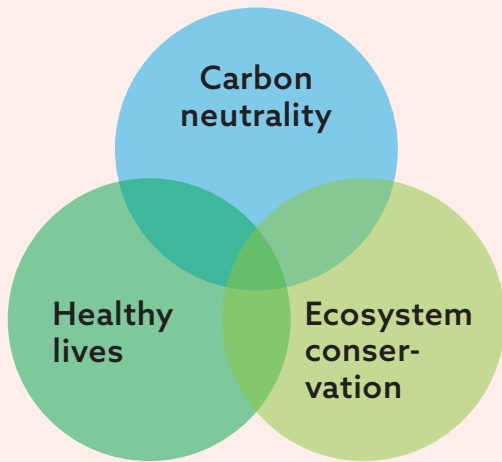
Sumitomo Chemical recognizes three core competencies: Its ability to develop innovative solutions by leveraging its technological expertise in diverse areas, its access to global markets, and its highly engaged and diverse human resources. These three cores have been cultivated under the tenets of its Management Principles.

Making the most of these competences, Sumitomo Chemical is fully focused on solving social issues surrounding the environment and food, and improving the quality of life of people.

Contribute to helping resolve major social issues through our business activities from the perspective of Green Transformation (GX) in a broad sense

Major GX challenges for Sumitomo Chemical

⇒ P.8-9



Social issues that Sumitomo Chemical endeavor to solve

Food



Secure stable food supply and achieve harmony with the environment

Agro & Life Solutions Sector

ICT



Achieve an inclusive society leveraging ICT

ICT & Mobility Solutions Sector

Healthcare



Secure healthy lifestyles for people throughout the world

Advanced Medical Solutions Sector

Environment



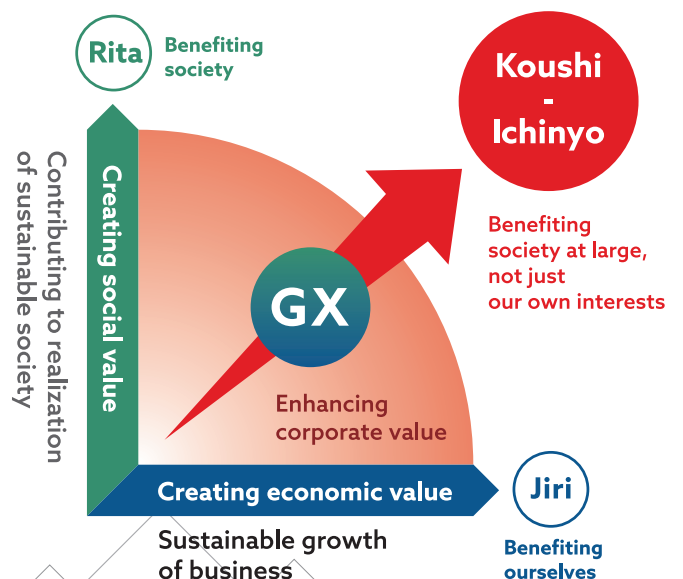
Recover the environment and achieve a world where humans and nature co-exist

Essential & Green Materials Sector

Provide Solutions

Achieve a Sustainable Society and Sustainable Growth for Sumitomo Chemical Group by Creating Both Economic Value and Social Value

A visualization of enhancing enterprise value through Jiri-Rita Koushi-Ichinyo



CORE
COMPETENCE

1

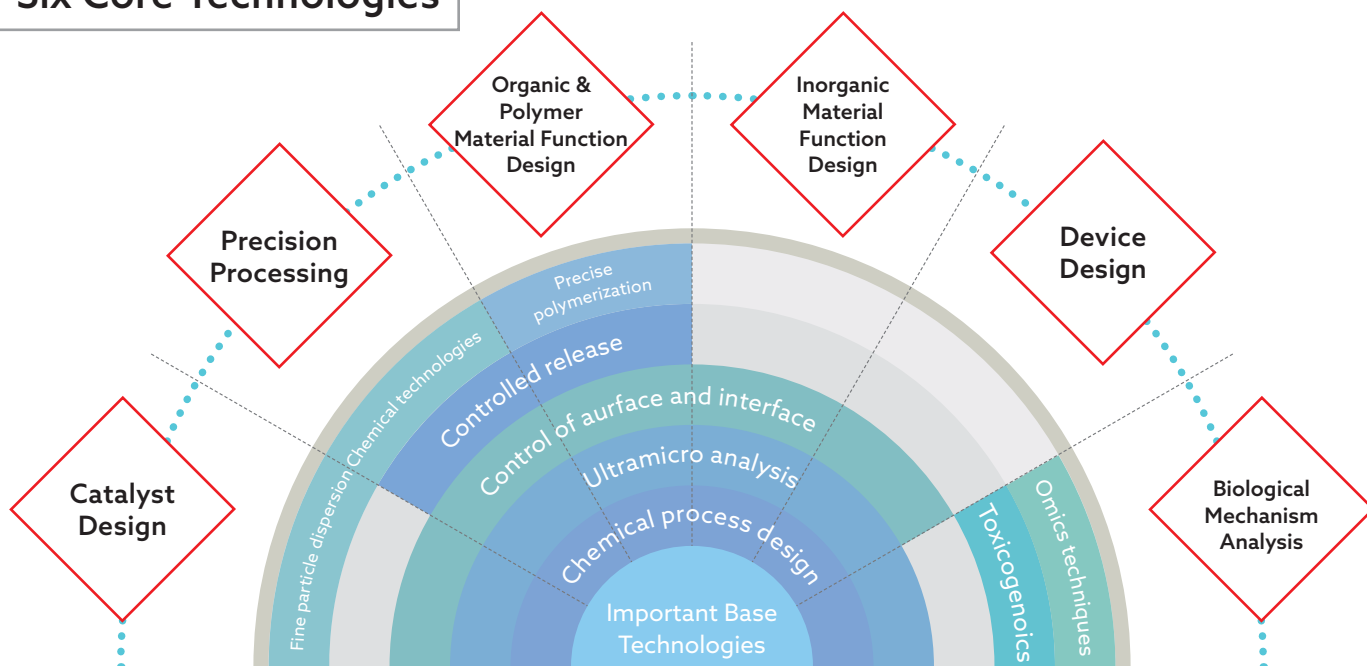
Ability to Develop Innovative Solutions

by Leveraging Its Technological Expertise in Diverse Areas

Sumitomo Chemical's "Six core technologies" were cultivated through extensive research activities over the years. The Company's basic strategy is to deepen these six core technologies, further enhance their base technologies, and create high-value added products and technologies through the fusion of technologies from different fields.



Six Core Technologies



Base Technologies

Organic synthesis, Inorganic synthesis, Analysis of chemical and physical properties, Toxicological safety assessment, Safety engineering, Material & plant engineering technology, Computer simulation

Research and Development Organization



Sumitomo Chemical's research organization comprises the Business Sector Research Laboratories, the Corporate Research Laboratories, and the Production & Safety Fundamental Technology Center. At the Business Sector Research Laboratories, both manufacturing and sales personnel are making concerted efforts on research and development (R&D) of products that maintain, strengthen, and expand their business activities, and R&D of basic and elemental technologies. The Corporate Research Laboratories are engaged in long-term research projects, including development of technologies required to enter new business fields, development of common base technologies that will give a competitive edge to sustain core businesses, and development of next-generation products and processes. The Production & Safety Fundamental Technology Center promotes R&D to strengthen security, disaster-prevention measures, and competitiveness of plants, while actively supporting the company's manufacturing operations.

Toward a Carbon Neutral Sumitomo Chemical

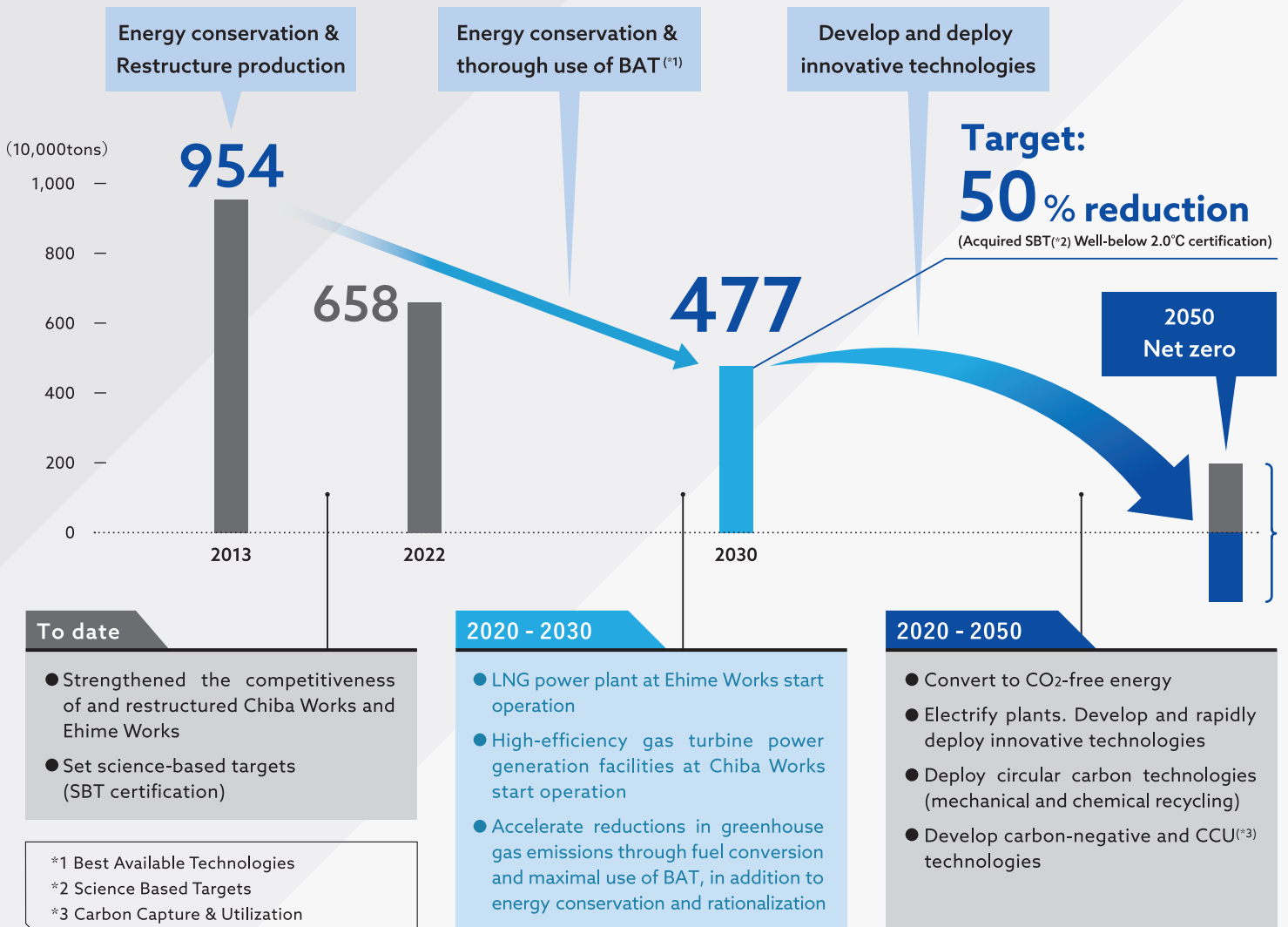
- Formulates Grand Design -

Sumitomo Chemical aims to become carbon neutral by 2050

Fulfill both **obligations** and **contributions** to strive to become carbon neutral by the Sumitomo Chemical Group way

Obligations
Approach zero greenhouse gas emissions for the Sumitomo Chemical Group

The Sumitomo Chemical Group commits itself to reducing its greenhouse gas emissions by 50% by FY2030 (vs. FY 2013 levels)





Work with a variety of stakeholders to be the first to deploy into society products and technologies that contribute to global greenhouse gas reductions

Three perspectives

1 Provide products and solutions that contribute to carbon neutrality

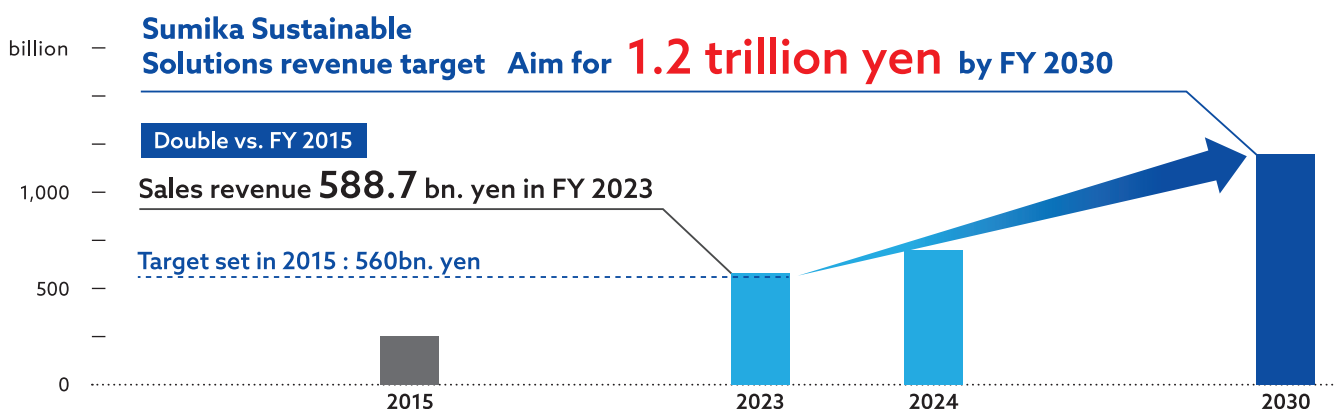
2 Drive the development of technologies that contribute to carbon neutrality and their rapid deployment into society

3 Take on long-term challenges including the development of carbon negative technologies

Contributing through Business

Sumika Sustainable Solutions (SSS)*

*An initiative to designate products and technologies that contribute to responding to global warming or reducing environmental impact, in order to promote their development and spread



Science Based Contributions (SBC)

The Quantification of Sumitomo Chemical's Contribution to Reducing GHG Emissions through SSS certified Products and Technologies

We quantify the amount of GHG reduction in society we contributed to through the Sumika Sustainable Solutions certified environmental impact reduction products and technologies, as well as disclose this information as one of the ways we contribute to solving societal issues.

FY2023 SBC results: reduction of 7.1 million tons of GHG*

*The amount of GHG emissions that were reduced in society through the use of the SSS-certified products and technologies sold by Sumitomo Chemical

SSS technologies	Propylene oxide only process Hydrochloric acid oxidation process	×	Licensees	>	2.7 million tons of CO ₂
SSS end products	Feed additive methionine Herbicide flumioxazin, etc.	×	Users	>	4.4 million tons of CO ₂
SSS materials and components	Separators, etc.	×	Users	>	Not applicable (under consideration)



Propylene oxide-only manufacturing process plant



Herbicide flumioxazin

Calculation method: the total difference in carbon footprint calculated by comparing the carbon footprint of SSS products with that of technologies and products in widespread use as of 2013 (based on single-year sales volume).

CFP-TOMO™ : Our Proprietary Carbon Footprint of Products Calculation Tool

- CFP-TOMO™, a tool that will enable anyone to easily calculate the carbon footprint of products (the amount of greenhouse gases emitted over each product's "Cradle to Gate" lifecycle), was developed by Sumitomo Chemical
- We completed carbon footprint evaluations for about 20,000 of our products, and are also in the process of performing CFP evaluations for the main products of group companies
- By making the tool freely available to other companies, we are contributing to quantifying and reducing greenhouse gas emissions for society as a whole and are working with the Japan Chemical Industry Association



CORE COMPETENCE

2

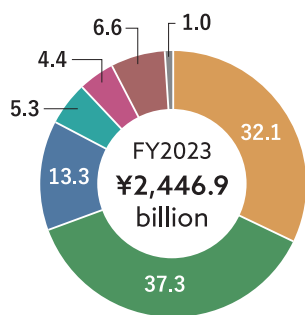
Access to Global Markets

Sumitomo Chemical has actively globalized all of its businesses to respond to changes in the global economy and social frameworks. The Company will continue to provide its solutions globally and create new value.

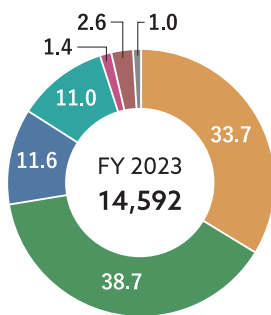


Information by Region

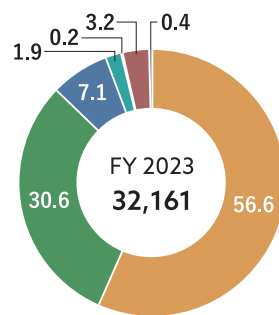
Sales Revenue by Region (%)



Patents Held by Region (Non-consolidated) (%)



Employees by Region (%)



Japan Asia North America Europe Middle East and Africa Central and South America Oceania and Others



Saudi Arabia
Rabigh Refining and Petrochemical Company



South Korea
SSLM Co.,Ltd.



China
Sumika Electronic Materials (Wuxi) Co., Ltd.



United States
Valent BioSciences LLC

Domestic Facilities



Head Office (Tokyo)



Head Office (Osaka)



Misawa Works



Ibaraki Works



Advanced Materials Development Laboratory (Tsukuba)



Chiba Works



Agro & Life Solutions Research Laboratory (Takarazuka)



Osaka Works



Ehime Works, Ohe Works



Oita Works



CORE
COMPETENCE

3

Our Highly Engaged and Diverse Human Resources

The Sumitomo Chemical Group has more than 30,000 employees working around the world. Some of the greatest strengths of the Group are the engagement of our employees, in other words, the high degree of connection between the awareness of our employees and our business activities, and the diverse backgrounds of our human resources.



Instilling the Corporate Philosophy Sumitomo Chemical Group JIRI-RITA ACTION

To accelerate the promotion of sustainability, the Sumitomo Chemical Group considers it essential that all executives and employees share the Corporate Philosophy, have a deep understanding of sustainability, and work together to carry out our initiatives. As an effort to engage all officers and employees and promote this "participation by all" principle, we have run the Global JIRI-RITA ACTION.

FY2023 Project

The project's theme was carbon neutrality, which is one of the broad sense of green transformation (GX) outlined in our FY2022-FY2024 Corporate Business Plan. The Group's executives and employees from across the world posted about what they are doing in their daily lives and at work to reduce CO2 emissions on a dedicated website, and shared it across the Group.

Number of participating companies

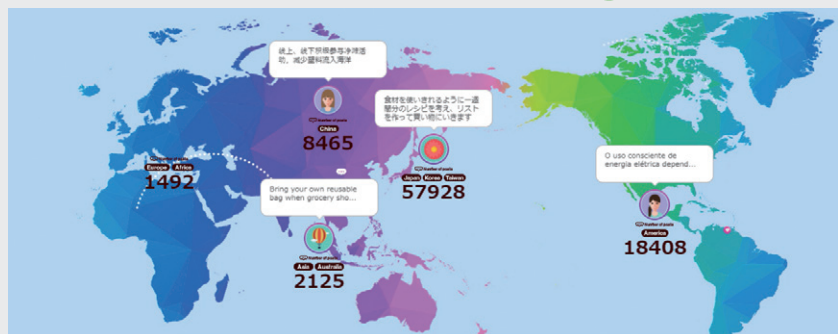
113

Number of actions*

26,364

*Number of actions: Number of posts and positive comments

SUMITOMO CHEMICAL GROUP



Executives and employees around the world provided many posts and positive comments

Human Resources

"People" are a major source of corporate competitiveness, and securing and developing human resources is a key issue for our future value creation. Sumitomo Chemical will promote the securing and development of human resources, which we consider to be our most important management resource, from a long-term perspective and achieve sustainable growth of our Group through enhanced engagement.

DE&I

We have raised " Diversity, Equity & Inclusion (DE&I)" as one of the material issues to be addressed as management priorities, and are promoting gender equality.

Percentage of female employees in managerial positions and above

9.5%

(FY2023 - Non-consolidated)

Percentage of male employees taking maternity leave and related leaves

97.3%

(FY2023 - Non-consolidated)

Human Resources Development and Growth

In accordance with our personnel system's basic philosophy of "development and growth," we have established a step-by-step, purpose-driven training system to improve the skills of all of our motivated and capable employees.

Investment in Training (FY2023 - Non-consolidated)

Results

Approx. **¥350,000**
/ year per person

Target

¥300,000
/year per person or more continuously

Time Spent on Training (FY2023 - Non-consolidated)

Results

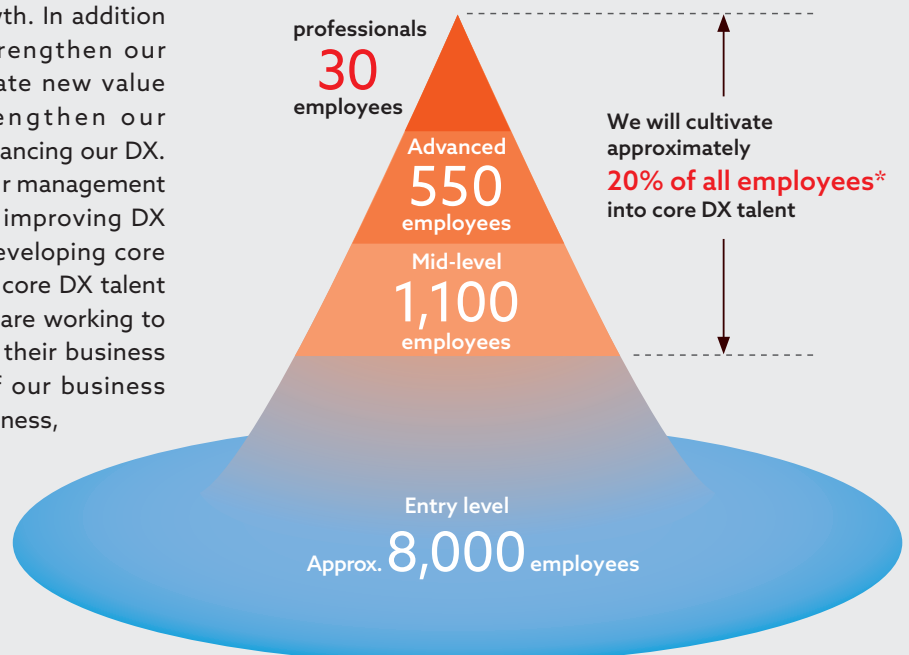
39.4%
of regular working hours

Target

50% or more of all employees taking self-selected training programs by FY2024

Securing DX Talent

Digital transformation (DX) is the engine that accelerates transformation and growth. In addition to accelerating our efforts to strengthen our business competitiveness and create new value through DX, we will also strengthen our management foundation through enhancing our DX. Sumitomo Chemical, to strengthen our management base, is securing DX talent by both improving DX literacy among all employees and developing core DX talent. With the goal of assigning core DX talent who drive DX to all departments, we are working to develop DX talent who will combine their business knowledge and DX skills in each of our business areas, including R&D, production, business, and corporate units.



* Approximately 8,000 employees, including non-consolidated employees and temporary employees

(Estimated number of employees as of the end of FY2024)

We will enhance the DX literacy of all employees*

Business Sectors

Sumitomo Chemical currently operates businesses in four sectors – Agro & Life Solutions Sector, ICT & Mobility Solutions Sector, Advanced Medical Solutions Sector, and Essential & Green Materials Sector – and supplies solutions (technologies and products) worldwide that underpin a wide variety of industries and people's lives.



Agro & Life Solutions Sector

AgroSolutions Division - Japan /
AgroSolutions Division - International /
Environmental Health Division / Animal Nutrition Division

The Agro & Life Solutions Sector is engaged in the manufacture and sale of crop protection chemicals, fertilizers, feed additives, household insecticides, and products for control of infectious diseases. By providing these products, we aim to contribute to a stable supply of crops, help increase food production in response to an increase in the world population, prevent the spread of infectious diseases, and achieve hygienic and healthy lives.



Various crop protection chemicals, including insecticides and herbicides



Products used for insecticides



Olyset™ Plus



DL-methionine and methionine hydroxy analog used as feed additives

ICT & Mobility Solutions Sector

Optical Materials Division / Electronic Materials Division /
Advanced Inorganic Products Division /
Advanced Materials Division / Battery Materials Division

The ICT & Mobility Solutions Sector manufactures and sells a wide range of products that contribute to the creation of new value in a society undergoing rapid change, driven by the acceleration of technological innovations such as AI: materials for displays such as polarizing films; materials for semiconductors such as photoresists; advanced materials and battery materials such as engineering plastics required for next-generation mobility and electronic components; advanced inorganic products such as high-purity alumina and compound semiconductor materials that contribute to an energy-saving society.



Polarizing films "SUMIKARAN™"



Touch screen sensor panels



Color Resists "DyBright™"



Photoresist "SUMIRESIST™"



Compound Semiconductor materials



High purity alumina



Super Engineering Plastics



Resorcinol



Separator "PERVIO™"



Advanced Medical Solutions Sector

Pharma Solutions Division /
Nihon Medi-Physics Co., Ltd.

The Advanced Medical Solutions Sector is engaged in leading-edge medicines CDMO (Contract Development and Manufacturing Organization) business, including long-chain oligonucleotides, small molecule drugs. We are also engaged in the manufacture and sale of RI diagnostic agents and research and development of regenerative medicine and cell therapies. Through these solutions and products, we aim to meet a diverse range of medical and healthcare needs, contributing to healthier and more fulfilling lives.



Active pharmaceutical ingredients



Manufacturing of PET radiopharmaceuticals

Essential & Green Materials Sector

Essential Materials Division / Resin-related Business
Development Dept. / Polyolefins Division /
Automotive Materials Division / MMA Division

Essential & Green Materials Sector produces synthetic resins such as polyethylene, polypropylene, and methacrylic resin, as well as various industrial chemicals and inorganic materials. These products are applied to various applications, underpinning wide variety of industries. Sumitomo Chemical also strives to develop products that contribute to reducing environmental load such as recycled plastics, as well as provide innovative solutions by licensing technologies.



Automobile seats with cushion materials made using propylene oxide as a raw material



Automobile instrument panel made of polypropylene



Various products made using polyethylene



Large aquarium panel made of methyl methacrylate



A plant in Thailand where Sumitomo Chemical licensed its propylene oxide production method

Sumitomo Chemical Group's Sustainability

The Sumitomo Chemical Group defines the Ground Rules for Promoting Sustainability as "Contributing to a sustainable society through business while achieving our own sustainable growth." This has been our stance based on Sumitomo's Business Philosophy of "Our business must benefit society at large, not just our own interests." In promoting sustainability, we are committed to generate both economic value ("Jiri") and social value ("Rita") through innovation as well as contribute to addressing critical issues that face international community, including the achievement of the Sustainable Development Goals (SDGs).

External Evaluations

Major awards and credits Sumitomo Chemical has received for its ESG initiatives are shown below.



SUMITOMO CHEMICAL COMPANY, LIMITED

Company name SUMITOMO CHEMICAL COMPANY, LIMITED
Founded September 22, 1913
Capital 90,059 million yen (as of July 19, 2024)



<https://www.sumitomo-chem.co.jp/english/>

