

March 3, 2025

Sumitomo Chemical Announces Reorganization

Sumitomo Chemical hereby announces that, as of April 1, 2025, the Company will implement a reorganization as outlined below.

1. Head Office

The Digital and Data Science Innovation Department and IT Promotion Department will be merged to form the new DX Acceleration Office. This reorganization is part of Sumitomo Chemical's efforts to accelerate new value creation by quickly adapting to dramatic changes in the business environment and to business transformations driven by accelerated advancements in technologies such as AI.

[After reorganization]

(New or reorganized organizations are highlighted in red)

(Head Office Organization)

├—DX Acceleration Office

(Omitted)

[Before reorganization]

(Head Office Organization)

├—IT Promotion Department

├—Digital and Data Science Innovation Department

(Omitted)

2. The Agro & Life Solutions Sector

In accordance with changes made to the sales structure of the feed additive methionine business, the Company will establish the new Animal Nutrition Department within the AgroSolutions Division – International. With the operations related to feed additive methionine products transferred to the Animal Nutrition Department, the Animal Nutrition Division will be abolished.

[After reorganization]

(New or reorganized organizations are highlighted in red)

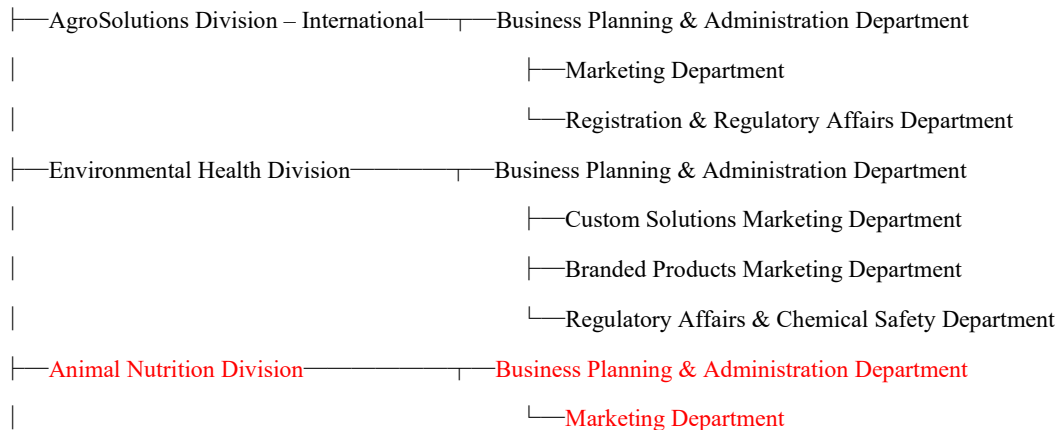
(Agro & Life Solutions Organization)



(Omitted)

[Before reorganization]

(Agro & Life Solutions Organization)



(Omitted)

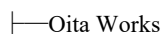
3. The Advanced Medical Solutions Sector

Okayama Plant of Oita Works and Gifu Plant of Oita Works, organizations belonging to the Agro & Life Solutions Sector, will be reorganized into Okayama Works and Gifu Works, respectively, and both Okayama Works and Gifu Works will come under the Advanced Medical Solutions Sector.

[After reorganization]

(New or reorganized organizations are highlighted in red)

(Agro & Life Solutions Organization)



|—Misawa Works

|—————Okayama Works (Agro & Life Solutions)

|—————Ehime Works (Agro & Life Solutions)

|—————Osaka Works (Agro & Life Solutions)

(Omitted)

(ICT & Mobility Solutions Organization)

|—Osaka Works

|—Ohe Works

|—Ibaraki Works

|—————Oita Works (ICT & Mobility Solutions)

|—————Okayama Works (ICT & Mobility Solutions)

|—————Ehime Works (ICT & Mobility Solutions)

|—————Chiba Works (ICT & Mobility Solutions)

(Omitted)

(Advanced Medical Solutions Organization)

|—Okayama Works

|—Gifu Works

|—————Oita Works (Advanced Medical Solutions Organization)

|—————Ehime Works (Advanced Medical Solutions Organization)

|

(Omitted)

(Oita Works Organization) (Omitted)

(Okayama Works Organization) (Omitted)

(Gifu Works Organization) (Omitted)

[Before reorganization]

(Agro & Life Solutions Organization)

|—Oita Works

|—Misawa Works

|—————Ehime Works (Agro & Life Solutions)

└─────────── Osaka Works (Agro & Life Solutions)

(Omitted)

(ICT & Mobility Solutions Organization)

└ Osaka Works

└ Ohe Works

└ Ibaraki Works

└─────────── Oita Works (ICT & Mobility Solutions)

└─────────── Ehime Works (ICT & Mobility Solutions)

└─────────── Chiba Works (ICT & Mobility Solutions)

(Omitted)

(Advanced Medical Solutions Organization)

└─────────── Oita Works (Advanced Medical Solutions Organization)

└─────────── Ehime Works (Advanced Medical Solutions Organization) |

(Omitted)

(Oita Works Organization)

└ Okayama Plant

| └ General Affairs Department

| (Omitted)

└ Gifu Plant

└ General Affairs Department

(Omitted)