

Contributions to Communities

Basic Stance

The Sumitomo Chemical Group contributes to communities in accordance with the three following perspectives, which reflect the Group's Business Philosophy and the Basic Principles for Promoting Sustainability.

Community Commitment

We commit to a sustained coexistence and collaboration with local communities, utilizing our unique insights, expertise, and knowledge to address their ongoing challenges.

Personal Growth

We encourage personal development through our active engagement in the communities where we operate, fostering individual insights and growth that support our business's social value creation.

Community of Care

We aim to broaden our sphere of empathy by conveying our community involvement, contributions and insights with a cohesive voice to all stakeholders.

Regarding communication with society, while enhancing information disclosure and engaging in interactive dialogue, Sumitomo Chemical, its worksites in Japan and overseas, and Group companies engage in a variety of activities to ensure harmonious coexistence with local communities. In this way, we are building good relations with them. Sumitomo Chemical works to foster smooth communication so as to continue conducting better business activities as a community member. Going forward, while gaining the understanding and cooperation of local community members, we will proactively disseminate necessary information and, through continuous opinion exchanges with various stakeholders, foster greater understanding of the Company and earn more trust.

Note: The sections entitled "Contributions to Communities" and "Community Contribution Activities" refer to the "Social Contributions" and "Social Contribution Activities" the Group has undertaken up to now.

Management System

We are contributing to communities throughout the entire Sumitomo Chemical Group, including Sumitomo Chemical's Head Office, each worksite, and each Group company. To encourage such activities across the Group, we hold manager meetings attended by managers from each worksite, Domestic Group Company Liaison Meetings for domestic Group companies, and Regional Meetings in each region for overseas Group companies. These meetings enable attendees to share information and exchange opinions.

We are cooperating with the labor union in planning and conducting certain community contribution activities.

Goals and Results

For details on our goals and results for contributions to communities, please refer to the section entitled Social Activity Goals and Results.

▶ **Social Activity Goals and Results:** Contributions to Communities 

Volunteering Activity Results

■ FY2023 Main Community Contribution Activities at Bases in Japan (Sumitomo Chemical*1)

Type of Activity	Number of Events
Education for the next generation*2 (including science classes held at schools, children's office visits)	24
Cleaning beaches and neighborhoods around worksites	60
Worksite tours, community dialogues, hands-on work experiences	35
Hosting and participating in regional sports competitions, festivals, and other events	23

*1 Includes some Group companies in Japan

*2 Includes content related to the SDGs and sustainability

■ Volunteers for the OISCA Coastal Woodland Rejuvenation Project (Sumitomo Chemical Group*3)

	(No. of people)		
	FY2021	FY2022	FY2023
Number of volunteers for the OISCA coastal woodland rejuvenation project*4	0*5	0*5	0*5

*3 Sumitomo Chemical and Group companies in Japan participating in the Matching Gift program

*4 Volunteer activities in Natori, Miyagi Prefecture

*5 Suspended due to the pandemic

▶ **Support for Recovery from the Great East Japan Earthquake**

Donation Results

When selecting organizations for donation, we take into consideration the manner in which they contribute to the development of a sustainable society as well as the effects of their actions from the perspectives of social significance, resonance with the Company's business, global and local opinions, and if the issue they are addressing is long term or of immediate urgency.

■ FY2023 Major Donations to Community Contribution Activities (Sumitomo Chemical)

Item	Amount (Million yen)
Support for the 2024 Noto Peninsula Earthquake*1	19.8
Support for education in Africa (Plastic Recycling Education)	1.4
Support for the development and education of children through ASHINAGA (Matching Gift program*2)	7.5
Support for OISCA's tree planting activities (Matching Gift program*2)	6.3
TABLE FOR TWO (Matching Gift program*2)	0.6

*1 Total sum of donations from executives and employees

*2 Donation figures for Matching Gift programs are the amount of money provided by the Company.

■ Number of Major Donations in FY2023 (Sumitomo Chemical)

Total number of donations: 310

Item	Number of cases
Local community activities	139
International exchange and cooperation	17
Sports	9
Academic study and research	9
Culture and art	11
Education and social education	25
Social welfare	12
Environment	11
Support to areas devastated by disasters	5
Others (Health, medicine, Accident prevention, politics*3, etc.)	72

*3 Sumitomo Chemical appropriately and fairly makes donations to political organizations, taking into comprehensive consideration the cost burden of social responsibilities that a company should fulfill as a member of society and its duty to help stimulate economies and support society as well as significance to the Company's business. We make these donations in compliance with relevant laws and regulations and through a process defined in our in-house rules. (FY2023 Results: The People's Political Association 50 million yen)

Community Contribution Activities at Group Companies in Japan and Overseas

At Group companies in Japan and overseas, we emphasize community bonds and contributions at each business location and proactively conduct community contribution activities as a part of our broadly defined CSR activities, including creating shared value by leveraging the unique characteristics of each company.

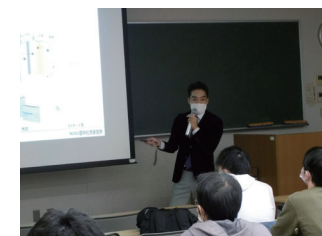
In fiscal 2023, we conducted more than 500 social contribution activities, including activities aimed at contributing to local communities and activities aimed at enhancing employee awareness through donations and fund raising.

The Sumitomo Chemical Group will continue to work toward helping solve social issues, educating employees, and providing integrated communication mainly through community contributions in collaboration with the Company's worksites, initiatives promoted by the entire Group in unison, and promoting education for citizens and the broader society while respecting the individuality of employees.

■ Community Contribution Activities at Group Companies in Japan and Overseas

FY2023 Results

Approx. **500** activities



Guest lecture conducted at a nearby university (Group company in Japan)



Clean-up activity around the United Nations HQ (Group company overseas)

Examples of Initiatives

Examples of Initiatives (The Sumitomo Chemical Group)



Securing Safety and Health, and Protecting the Environment

- Work and research laboratory tours
- RC dialogues and distribution of local newsletters
- Malaria prevention campaign
- TABLE FOR TWO program
- Matching Gift program (support for tree-planting activities)
- Cooperation with U.N. activities
- Support for infection control measures
- Local clean-up activities



Raising Children Who Will Lead the Next Generation

- Establishment of in-house childcare facilities
- Launch of Young Inventors' Club, Science Workshops, etc.
- Sponsorship of community sports events
- Cooperation on civic and university courses
- Acceptance of student interns
- Matching Gift program (educational and developmental support for children)
- Educational support in Africa
- University scholarship programs



Assisting in Natural Disaster Relief

- Relief activities after typhoons, earthquakes, and other disasters
- Offering facilities for public use after major disasters
- Relief donations for victims of hurricanes, earthquakes, etc.

Securing Safety and Health, and Protecting the Environment

Initiatives to Ensure Safety at All Group Workplaces

The Sumitomo Chemical Group explains to neighboring residents our efforts to ensure safety, and work to deepen our mutual understanding. Specifically, every year, all worksites create and publish their own environmental and safety reports, detailing the initiatives taken at each worksite. The Ehime, Osaka, and Oita worksites disseminate information that is especially relevant to their communities by, for example, publishing community newsletters that are inserted into newspapers. Moreover, we proactively cultivate diverse two-way dialogue from a wide range of perspectives. Our activities include

regular dialogue meetings, opinion exchanges, and Works tours held with local community members, conducting risk communication model businesses in cooperation with municipalities, conducting support businesses focused on the environment and safety for local governments and companies, and holding community dialogues in collaboration with the chemical industry.

Status of Dialogues with Local Communities

FY2023 Results*

Number of dialogues held	Participants
8	249

* Cumulative result of each Sumitomo Chemical worksite

Report on the Environment and Safety (at all worksites) (Japanese only)

<https://www.sumitomo-chem.co.jp/sustainability/information/library/>

Clean-up Activity: Global Clean-up Challenge

The Sumitomo Chemical Group helps solve the plastic waste problem through clean-up activities at each worksite and their neighboring communities, beaches, and other areas.

It is said that one of the sources of increasing marine waste, including plastic waste, is garbage left outside and waste thrown away that will enter waterways due to wind and rain then flow out to sea. The clean-up activities we can do at nearby locations are connected to countermeasures against the marine waste problem.

The Group will continue promoting a clean-up initiative called the "Global Clean-up Challenge" with the aim of understanding and addressing the plastic waste problem.

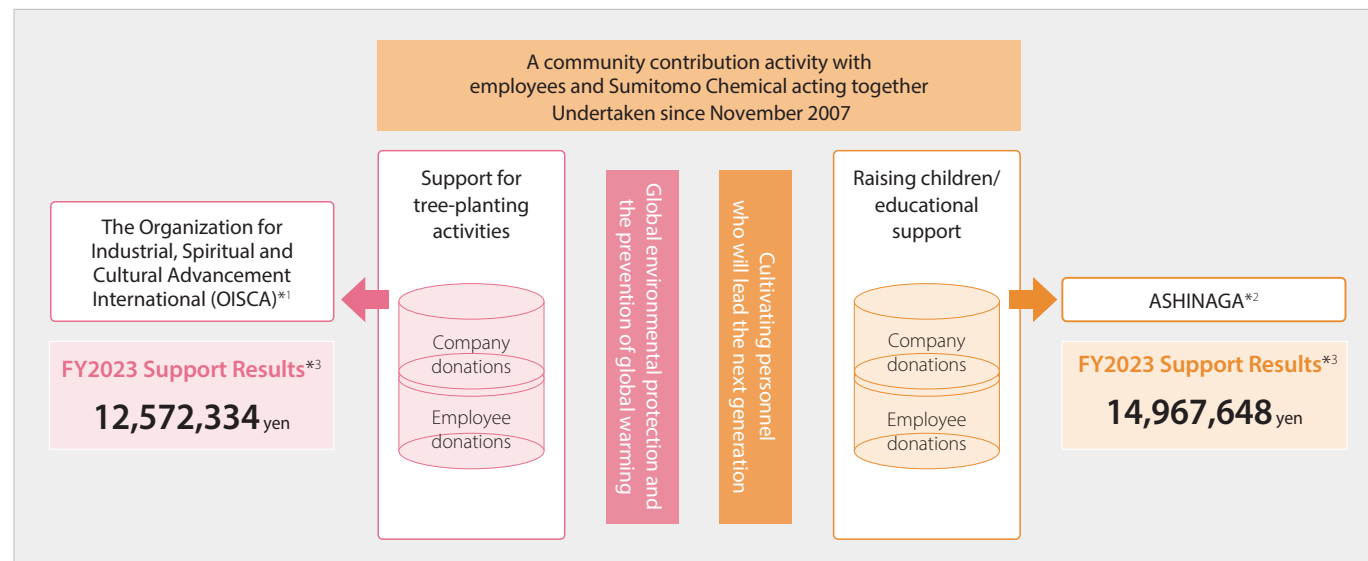


Clean-up at the Arakawa riverbed

Matching Gift Program

As a community contribution activity with employees and the Sumitomo Chemical Group acting together since 2007, the Matching Gift program, which is run in collaboration with the labor union, collects donations from management executives and employees working at Sumitomo Chemical and Group companies. Sumitomo Chemical then matches their donations.

■ Matching Gift Program



One of the beneficiaries of the donations from the Matching Gift program is the Organization for Industrial, Spiritual and Cultural Advancement International (OISCA),*1 with whom we work on various tree-planting projects. In collaboration with the labor union, we have been dispatching employee volunteers to help with these projects since 2008.

TABLE FOR TWO Activities

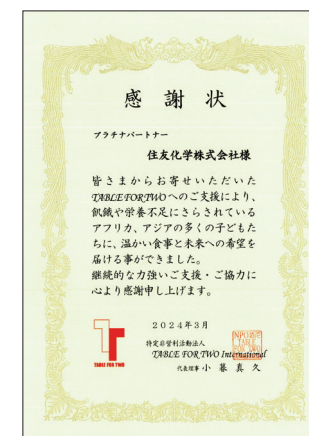
Since May 2008, each of Sumitomo Chemical's worksites has participated in the TABLE FOR TWO (TFT) initiative. Participating companies in this Matching Gift program donate an amount of money equal to the total donated by management executives and employees.

When employees choose to eat any of the healthy TFT menu options available at the Company's cafeterias, 20 yen per meal is donated to help fight starvation in developing countries as well as obesity and lifestyle diseases in advanced nations. Through these types of social contribution activities originating in Japan, we are working to eliminate food disparity.

For the Company's support in 2023, Sumitomo Chemical received a letter of appreciation as a Platinum Partner from the TABLE FOR TWO secretariat.

2023 Results*3

1,109,240 yen 27,731 meals



*1 The Organization for Industrial, Spiritual and Cultural Advancement International (OISCA) is a global NGO engaged in rural development and environmental protection, mainly in the Asia-Pacific region. The money donated by Sumitomo Chemical to this organization is used for its Children's Forest Program and Japan's Coastal Forest Restoration Project following the Great East Japan Earthquake.

*2 ASHINAGA is an NPO established to provide physical and mental support for children who have lost their parents because of illness, accidents, or for other reasons. The money donated to this organization is used to provide a scholarship fund for these orphans.

*3 Total sums after matching by the Company, donations from executives and employees, and company payments

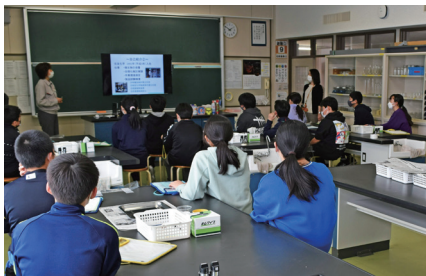
Raising Children Who Will Lead the Next Generation

Supporting Education through Science Workshops

The Sumitomo Chemical Group holds science workshops for children to conduct experiments and make crafts. These workshops enable them to experience the wonders and appeal of science with their own hands, in order to convey in a manner that children can easily understand how the products all around them are linked to chemicals.

These science workshops are held during tours of plants and research laboratories and through class visits, including at schools near worksites and at summer vacation events sponsored by local municipalities.

Misawa Works also engages in school visits, mainly for fifth and sixth grade classes at nearby elementary schools. Employees visit schools as lecturers and, after introducing the operations and products of the Works, conduct fascinating chemical experiments closely with students, such as one that uses a water-absorbent polymer to create a cup that does not spill water. The children were dazzled by the experiments and provided such feedback as, "chemistry is fascinating and fun."



A class visit

Platform for Learning Innovation - Japan

Sumitomo Chemical is a regular member of the Platform for Learning Innovation - Japan (PLIJ). PLIJ is an organization that collaborates with key players in industry, academia (technical colleges and universities), government (national agencies and research institutions), municipalities, and education (high school educators) with the main aim of spurring innovation in elementary and secondary education, mainly in STEAM (science, technology, engineering, arts, and mathematics) areas.

In fiscal 2023, the Company participated in an event hosted by PLIJ for female middle and high school students in which female corporate employees spoke about opportunities for advancement for women and their working experience. A female researcher from Sumitomo Chemical talked about how she built her career in a chemical company and why it is an attractive opportunity, demonstrating this is a potential future career option.

PLIJ's website (Japanese only)

<https://plij.or.jp>

14th Eco Proverb Contest

As an Eco-First Company certified by Japan's Ministry of the Environment and as a participating company in the Eco-First Promotion Council,* Sumitomo Chemical is a cosponsor of the Eco Proverb Contest.

In fiscal 2023, the theme was "Let's think about what we can do now for our future selves: Aiming to keep the Earth beautiful in 2050". The council collected self-written proverbs created by elementary and middle school students across Japan. As one of the companies that provide corporate awards, Sumitomo Chemical selected the following work that embodies its vision aiming to solve the waste problem, including waste plastics, for the Sumitomo Chemical Award in FY2023.

On the day of the award ceremony, SYNERGYCA presented a way to have a fun learning experience about resource recycling while playing a puzzle designed to look like a molecule and offered a virtual-reality tour of manufacturing frontlines.

* This council comprises 56 Eco-First Companies certified by the Minister of the Environment as the best in their industry regarding environmental conservation. Each participating company collaborate across industries to promote environmental conservation activities.

Sumitomo Chemical Award

リサイクル 未来へわたる バトンだよ

Recycling is a baton passed to the future

(The English text is a translation of the original Japanese composition above)

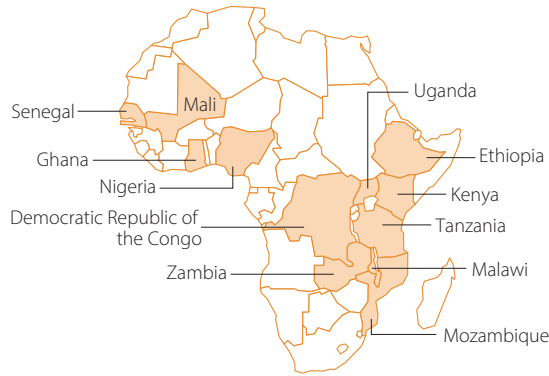
Kentaro Seki

2nd grader at Tsukuba City Kaname Elementary in Ibaraki Prefecture
(as of receiving the award in 2023)

Support for Education in Africa

Sumitomo Chemical has been supporting education to support children, on whom Africa's future rests, since fiscal 2005. At first, we mainly supported the construction of schools, but, after studying how to best offer support as a chemicals company, we branched out into supporting female students and programs in science as well as ICT-related education.

Support for Education in Africa



Support Results

Beneficiaries: over **68,000** people

Supported countries: **12**
(33 projects completed)

Supporting Plastic Recycling Education in Nigeria

Since fiscal 2020, the Company has supported an initiative in Nigeria that contributes to resource recycling, which is one of the material issues to be addressed as management priorities. Sumitomo Chemical has been contributing to the Clean Our World (COW) Project, which is run by the Nigeria-based Oando Foundation with the aim of raising awareness of plastic recycling.

Over 32 million tons of garbage are generated in Nigeria every year, and more than 30% of that is classified as plastics. Currently, most of the plastic is not properly disposed of. It sometimes clogs pipes, causing flooding, and is also washed into the ocean via West Africa's main waterway, the Niger River. To resolve this situation, the

Oando Foundation established the COW Project in 2020. Through this project, we provide opportunities for elementary school children, those who will lead the future, to learn about the plastic waste problem and recycling, conduct local clean-up activities, and share out experience in collecting waste and processing it into daily commodities. A portion of the around 11 tons of plastic waste collected through this initiative was converted into school supplies and other products and given to children.

Going forward, Sumitomo Chemical will continue working to improve the educational environment as an important social contribution activity and actively promote initiatives aimed at resolving social issues on a global scale.



Sorting out collected plastic bottles



Syllabus adopted by public schools in Lagos

Support Results

Country	Collaborator	Support details
Tanzania	WVJ*1	Between 2005 and 2007, we built elementary schools, teacher housing, and other structures. In 2014, we built elementary schools and restrooms.
Kenya	WVJ*1	In 2005 and 2006, we built girls' dormitories, restrooms and other structures for elementary schools. In 2015, we built elementary schools and provided math and science teaching materials.
Zambia	WVJ*1	Between 2005 and 2007, we built middle schools, restrooms, teacher housing, and other structures.
Uganda	WVJ*1	In 2006, we built elementary schools, restrooms, and other structures. Between 2008 and 2011, we built schools, restrooms, and other structures. In 2019 and 2020, we built classrooms for elementary schools and raised awareness of malaria prevention techniques.
Ethiopia	WVJ*1	In 2007, we built elementary schools, middle schools, restrooms, and other structures. In 2013, we built elementary schools, restrooms, water storage tanks, and other structures.
Mali	PIJ*2	Between 2010 and 2012, we built elementary schools, restrooms, wells, and other structures.
Ghana	PIJ*2	Between 2010 and 2012, we built elementary schools, libraries, and other structures. In 2015 and 2016, we built technical schools, science laboratories, and other structures. In 2019 and 2020, we built technical high schools, science laboratories, and other structures, provided teaching materials, and provided training to teachers.
Malawi	WVJ*1	Between 2010 and 2012, we built elementary schools and other structures. In 2013, we built elementary schools, restrooms, and other structures.
Democratic Republic of the Congo	WVJ*1	In 2012 and 2013, we built elementary schools, restrooms, and other structures. Between 2016 and 2019, we built elementary schools, restrooms, and other structures, provided math and science teaching materials, provided training to teachers, and raised awareness of malaria prevention techniques.
Mozambique	PIJ*2	In 2012 and 2013, we built elementary schools, restrooms, and other structures.
Senegal	PIJ*2	In 2014 and 2015, we built elementary schools, restrooms, and other structures and provided training to school management committees. Between 2016 and 2019, we built middle schools, high schools, and restrooms, set up science laboratories, and enhanced science courses for girls.
Nigeria	Oando*3	Between 2017 and 2020, we set up ICT centers, provided computer peripheral equipment, and provided science, technology, engineering, and math (STEM) education. Between 2020 and 2023, we carried out clean-up activities, education related to plastic waste and recycling, and waste collection ("Clean Our World" (COW)*4 I project to COW*4 III project).

*1 WVJ: World Vision Japan

*2 PIJ: Plan International Japan

*3 Oando: The Oando Foundation of the Federal Republic of Nigeria

*4 A project established by the Oando Foundation that aims to raise awareness of plastic recycling

Assisting in Natural Disaster Relief

Support for the 2024 Noto Peninsula Earthquake

As support for the Noto peninsula earthquake in January 2024, Sumitomo Chemical donated ¥15 million through the Red Cross of Japan along with ¥4,776,500 from its executives and employees. In addition, in response to requests related to the Uru-Uru Relief Package from the Japan Business Federation's 1% Club, we donated stationery (Sumika-chan clear files) for elementary school students in affected areas, and six employees volunteered to pack up the stationery.

Support for Recovery from the Great East Japan Earthquake

Since the Great East Japan Earthquake of 2011, we have been promoting initiatives involving employee participation to keep the memory of the disaster fresh in people's minds. We have also been providing donations collected through the sale of "Disaster Hit Area Support Meals" served in our cafeterias since April 2011. We further expanded our efforts after joining the SANRIKU JOBAN MONO NETWORK in January 2023 in part by changing the name of our menu to the Sanriku Joban Support Menu and increasing the number of meals provided at the Tokyo Head Office. Under this scheme, a portion of sales is donated to a business that aids orphans in areas hit by the disaster, and the companies match that amount.

Since fiscal 2013, through the Matching Gift program, we have participated in the OISCA coastal woodland rejuvenation project aimed at rejuvenating black pine coastal woodlands in Natori, Miyagi Prefecture.

Since fiscal 2015, we have dispatched employee volunteers to the area to provide black pine saplings, plant trees, and weed and fertilize areas where trees have been planted with the aim of rejuvenating about 100 hectares of coastal woodland. These activities were suspended in fiscal 2023 in continuation from the previous fiscal year, however, to prevent the spread of COVID-19. We have already achieved our planting goal, and, going forward, we will continue to help manage the planted black pines on a voluntary basis.

Tokyo Head Office Held the Fukushima Market and Exhibition

Along with Sumitomo Pharma Co., Ltd., which is also based in the Nihonbashi Tower Building, and with the cooperation of Sumika Partners Co., Ltd., we co-hosted the Fukushima Market and Exhibition on March 26, 2024, in the cafeteria of our Tokyo Head Office. The market sold not only products from Fukushima Prefecture but also bento boxes from the SANRIKU JOBAN MONO NETWORK. Over 400 people visited the event, including the company presidents, and 1,232 products were sold for a total profit of ¥694,170. The day was an opportunity to raise awareness of the earthquake recovery while enjoying the wonderful products of Fukushima.



The exhibition

FY2023 Results

Disaster Hit Area Support Meals

628,120 yen **15,703 meals**

(Total sums after matching by the Company)

The Great East Japan Earthquake

Fukushima Children's Fund **262,400 yen** **6,560 meals**

(the portion used between April 2023 and September 2023)

The Great East Japan Earthquake

Iwate Learning Hope Fund **365,720 yen** **9,143 meals**

(the portion used between October 2023 and March 2024)

Community Contribution

https://www.sumitomo-chem.co.jp/english/sustainability/social_contributions

Community Contribution Activities through the Sumitomo Foundation

The Sumitomo Foundation was founded as a multi-purpose foundation in September 1991 by 20 Sumitomo Group companies, including Sumitomo Chemical, in commemoration of the 300-year anniversary of the opening of the Besshi Copper Mine, which is the foundation of the Sumitomo Group. With a fund comprising the managed profit of the foundation's assets, the Sumitomo Fund provides aid for basic scientific research, environmental research, cultural asset maintenance and repair work, overseas cultural asset maintenance and repair work, and Japan-related research in Asian countries.

Aid Results

FY2023 Results*

257 initiatives Aid amount **409 million yen**

* Total sum of the Sumitomo Foundation